

1 INGRAHAM STREET

At the corner of [96] Bogart Street

7,500 SF

Ground Floor

7,500 SF

Second Floor

2,500 SF

Outdoor Area

175 ft.

Frontage

Bushwick / E. Williamsburg

Neighborhood



Asking Rent

Please Inquire

Term

Long-term

Possession

Immediate

Status

Vacant

Highlights

- Full-building identity, up to 15,000 SF plus 2,500 SF of outdoor area at the Morgan L
- Suitable for all creative, hospitality, fitness, medical, F&B, and destination retail uses.
- Large windows on all sides with unobstructed views and light.
- Elevator access to the 2nd floor, HVAC installed, sprinklered, and bathrooms in place.
- Some ideal uses include breweries, roasters, event spaces, lounges, bars, restaurants, showrooms, and offices.

Neighbors

Netflix Studios, Roberta's, Ichiran Ramen, Eyval, Syndicated Theaters, Brooklyn Mirage, Sobre Masa, Sey Coffee, Otis, The Bogart Hotel.

Transportation

L at Morgan Ave
Uber in 1-2 mins

1 Ingraham St

MCRE Exclusive Agents

Max Lu // 917.330.3860 // max@mcre.nyc

Jamie Pelletier // 203.592.1212 // jamie@mcre.nyc



1 INGRAHAM STREET

At the corner of Bogart Street

PRIME RETAIL SPACE FOR LEASE



GROUND FLOOR SPACE



MCRE Exclusive Agents

Max Lu // 917.330.3860 // max@mcre.nyc

Jamie Pelletier // 203.592.1212 // jamie@mcre.nyc



1 INGRAHAM STREET

At the corner of Bogart Street



SECOND FLOOR SPACE



MCRE Exclusive Agents

Max Lu // 917.330.3860 // max@mcre.nyc

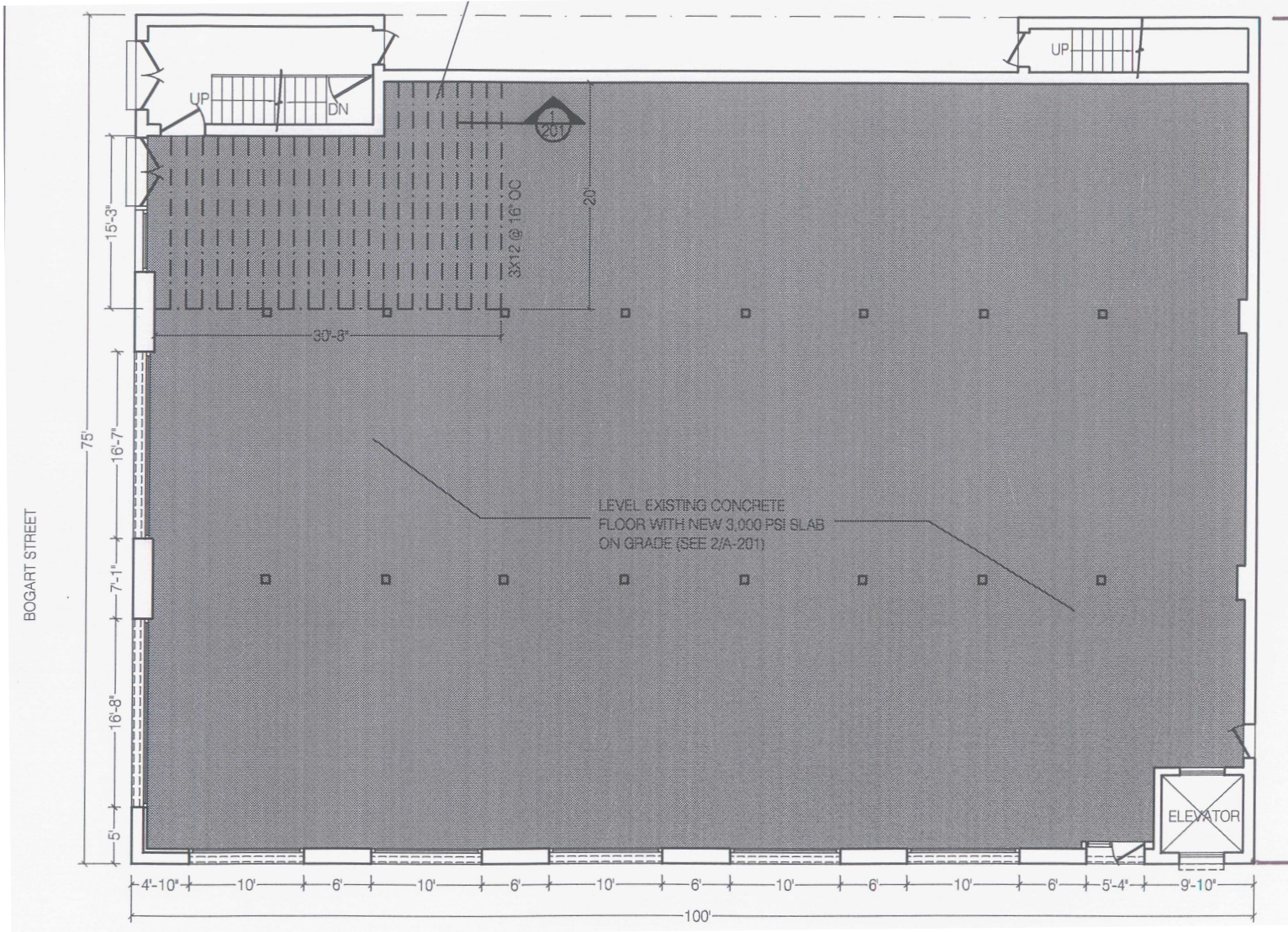
Jamie Pelletier // 203.592.1212 // jamie@mcre.nyc



1 INGRAHAM STREET

At the corner of Bogart Street

PRIME RETAIL SPACE FOR LEASE



MCRE Exclusive Agents

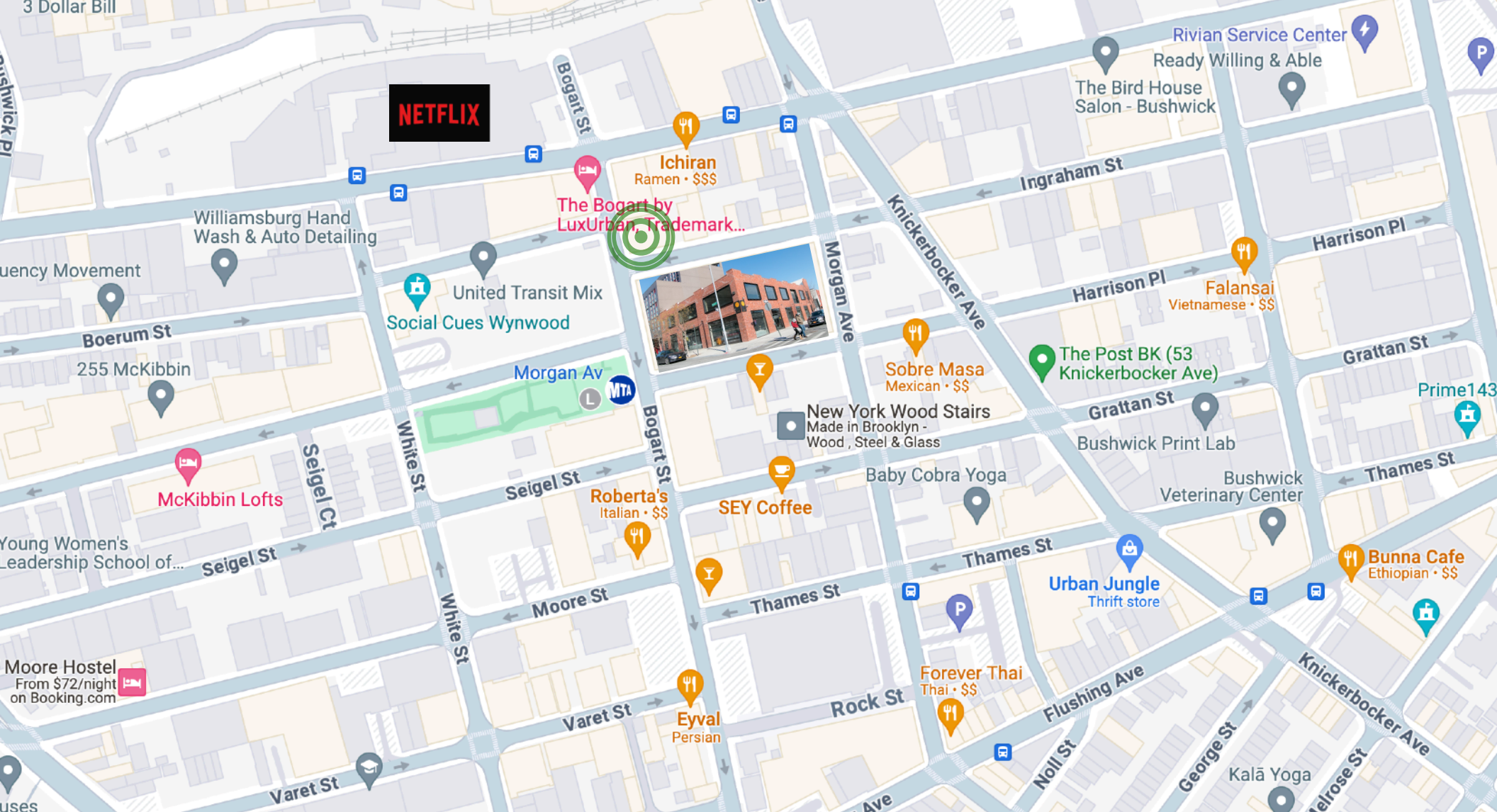
Max Lu // 917.330.3860 // max@mcre.nyc

Jamie Pelletier // 203.592.1212 // jamie@mcre.nyc



1 INGRAHAM STREET

At the corner of Bogart Street



MCRE Exclusive Agents

Max Lu // 917.330.3860 // max@mcre.nyc

Jamie Pelletier // 203.592.1212 // jamie@mcre.nyc

